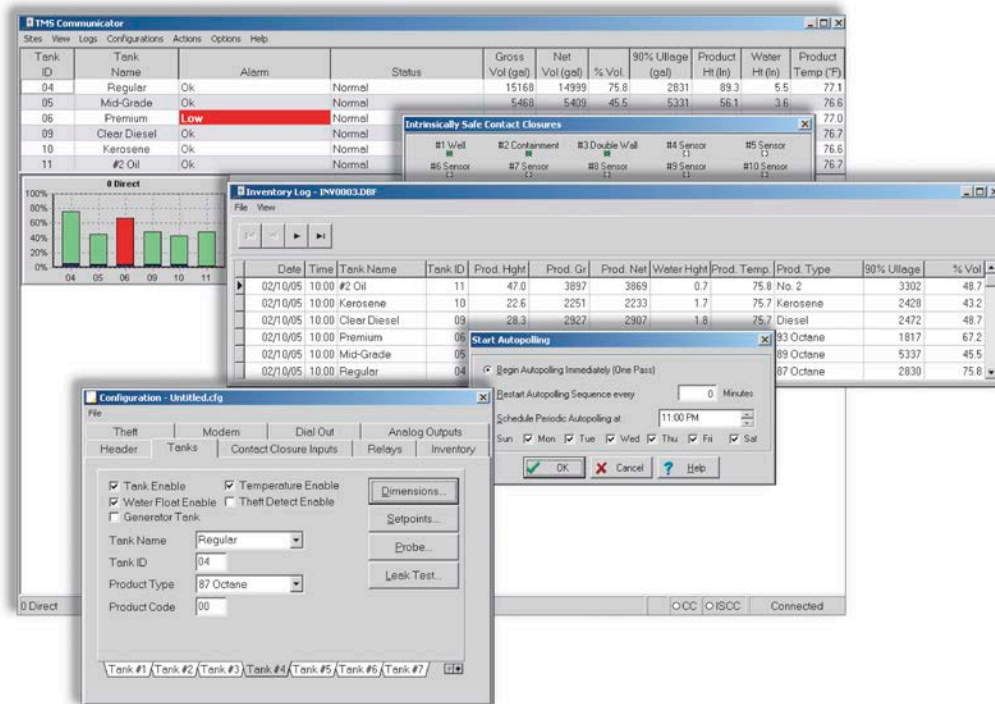


TMS Communicator Provides User-Friendly PC Connectivity for TMS Series Tank Management Systems and LC2000 Alarm Console



Product Description

TMSComm is a fully featured software program developed by Pneumercator to enhance the utility of TMS Series Tank Management Systems and LC2000 Alarm Console by providing remote access to all system features through a simple, user-friendly PC Windows® interface. This interface provides real-time tank gauging data and associated alarms, leak/point-level sensor statuses, historical log data, read/write system configuration data and firmware uploads, all in easy-to-read tabular, spreadsheet or bar graph formats. TMSComm can also be used off-line to create and save TMS/LC2000 configuration files for upload at a later time either remotely or by an on-site technician with a directly-connected laptop. Connectivity is supported via direct-connect serial, Ethernet TCP/IP LAN/WAN or modem communications, in any combination, to an unlimited number of sites. An additional feature of TMSComm is the included AUTOPOLL application that provides an automated polling and data collection process selectable by site and by task that includes e-mail alerts. Both TMSComm and AUTOPOLL can be run in the background, so a dedicated PC is not required.

Features

- View current tank inventory, alarms and statuses in easy-to-read tabular and/or bar graph formats. Real-time tank data includes Gross Volume, Net Volume (temperature-corrected volume), % Volume, Ullage, Product and Water Level, Volume-weighted Average Product Temperature. Alarms include Product and Water Setpoints, Leak/Point-Level Sensors, Contact Closure Input, Theft, In-Tank Leak and System Errors.
- View current status of leak/point-level sensors and contact closure inputs
- Retrieve TMS/LC2000 historical logs and generate hardcopy reports at the PC. Reports include Inventory, Delivery, Bulk Sales, Thefts, Product Ordering, Water Removal, Alarms, Events, In-Tank Leak Test Results and Leak Test History.
- Perform configuration and setup programming functions either on-line to the TMS/LC2000 or off-line to a file for later upload
- Remotely upload firmware updates to flash memory
- Supports direct-connect serial, Ethernet TCP/IP LAN/WAN or modem communications
- Autopolling capability with site-specific tasking functions permits automatic, unattended polling of hundreds of locations.
- E-mail alerts supported.
- TMSCOMM and AUTOPOLL can run in background so a dedicated computer is not required.
- Unlimited site setup capacity

System Requirements

- OS: Windows 2000 SP4, XP SP3, Vista, Windows 7, Windows 8, Windows 8.1, Windows 10, Windows 11, 32 or 64-bit
- OS Prerequisites (Windows 2000 and XP): Installer 3.1, .NET Framework 2.0, MSXML
- RAM: 512MB Minimum
- CPU: Pentium III class or higher, 500 MHz Minimum