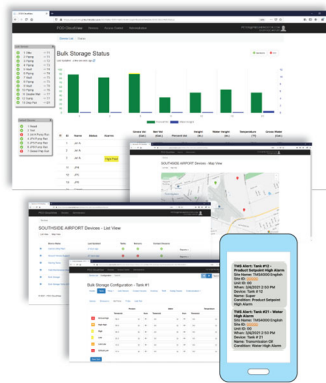


# Modular, Multi-Tank Gauging System w/ EPA-Compliant In-Tank and Secondary Containment Leak Detection, Internet-Ready via Ethernet or Cellular to PCO Cloudview



## Product Description

The TMS3000E Tank Management System is the enhanced version of the industry-proven TMS3000 series, with an extensive list of new features, including 6 programmable Product, Water and Temperature setpoints, Simulate mode, Ethernet TCP/IP (e-mail/SMS alerts included), USB host and client, RS232 (2 standard, expandable to 6) and RS485. Optional single, dual or quad ModBus, 4-20ma and other industrial protocols are supported. Web-ready for PCO CloudView access via Ethernet or optional internal cellular modem. Hardcopy reports are provided via optional internal thermal or impact printer in portrait and 116-character landscape modes, Ethernet-connected printer, or PDF to flash drive via front-panel weatherproof USB port. Universal, auto-switching AC power supply standard, DC input power options available.

## Console

- Dimensions (W x H x D): 14.3" x 11.8" x 7.9" (363 mm x 300 mm x 200 mm)
- Weight: 21 lb (9.6 kg) (4-Tank w/ Printer), 23.5 lb (10.7 kg) (12-Tank w/ Printer)
- Operating Temperature: -40 °F to 160 °F (-40 °C to 70 °C) w/o Printer  
-5 °F to 140 °F (-20 °C to 60 °C) w/ Printer
- Humidity: 95% Non-condensing
- Enclosure Rating: Locking NEMA 12 (IP52), NEMA 4 (IP56) or NEMA 4X (IP66) (304 SS)
- Enclosure Mount Options: Wall-Mount (Standard) or Panel-Mount (Optional)
- Power Requirements: 95-250VAC Autoswitching, 50-60 Hz, 30 W Max.  
10-60 VDC Optional
- Memory: Configuration/Setup Data – SD Card, 50 year data retention, no batteries  
Log Reports – Removable SD Card, 50 year data retention, no batteries  
Real-Time Clock – Super Cap-Backed, no battery required
- Audible Alarm: 85 db
- Display: 9-Character, Super-Bright Sunlight-Readable LED Data Display, Readable from 25' (7.6 m)  
Ultra-High Intensity Alarm LEDs, Visible from 75' (22.9 m)  
6 Product, Water and Temperature Setpoint LEDs
- Communications: Two (2) RS-232 Included Standard, RJ-13 Jack, Optional Expansion to six(6), four of which are field-selectable for RS232 or RS485  
Single RS485 Included Standard, RJ-13 Jack (For Pneumercator Peripherals)  
Ethernet TCP/IP Port Included Standard  
USB Host and Client Included Standard  
Internal, Secured Cellular or Landline Modem, Single/Dual/Quad-Channel ModBus Optional
- Probe/Sensor Capacities: Probe/Sensor Card Options (3 slots available) All Sensor Inputs Supervised-Wiring-Ready  
4 Probe/8 Sensor and 16 Sensor (Max 12 Tanks)
- I/O, Non-Haz.: Expansion Options (2 slots available):  
4 Relays, 1 Form C, Rated 10 A@120 VAC, 6 A@240 VAC, w/ 4 Opto-Isolated Inputs  
8 Relays, 1 Form A, Rated 5 A@120 VAC, 5 A@240 VAC, w/ 8 Opto-Isolated Inputs  
16 Relays, 1 Form A, Rated 5 A@120 VAC, 5 A@240 VAC  
32 Relays, 1 Form A, Rated 1 A@24 VDC  
6 or 12-Ch. Programmable Analog Outputs: 0-1 mA, 0-20 mA, 0-24 mA, 4-20 mA, 0-5 VDC, 1-5 VDC



Pneumercator Company, Inc.  
1785 Expressway Drive North  
Hauppauge, New York 11788

Tel: (631) 293-8450  
Fax: (631) 293-8533  
<http://www.pneumercator.com>

## Probes

---

- Technology: Magnetostrictive, Dual Float, w/ reflection resolution doubling
- Accuracy (Minimum):
 

MP45xS:	MP46x:
Product Level: 0.0005" (0.013 mm)	Product Level: 0.01" (0.25 mm)
Water Level: 0.001" (0.025 mm)	Water Level: 0.01" (0.25 mm)
Temperature: 0.001 °F (0.0006 °C)	Temperature: 0.001 °F (0.0006 °C)
- Materials: Shaft: 316 SS or PVDF  
Floats: 316 SS, Buna-N, Urethane, or PVDF
- Mounting: In-Tank Leak Testing: 4" (102mm) diameter riser  
Inventory Only: 2" (51 mm) minimum riser or direct bushing / flange mount
- Temperature Sensing: 5 Thermistors in shaft, 1 in probe head
- Location Approval: UL Class I, Div 1, Groups C and D; cUL Class I, Zone 0, Group IIB
- Operating Temperature: -40 °F to 175 °F (-40 °C to 80 °C)
- Operating Pressure: 150 PSIG (1034 kPa) 316SS, 50 PSIG (345 kPa) PVDF
- Field Wiring: 22AWG, 2-Conductor twisted pair w/ shield  
Belden 8441, 8761, Alpha 1736C or equiv., max. length 3000' to 4600' (914 m to 1402 m)
- Models: MP45xS Series rigid SS max. length 24' (7.3 m)  
MP46xS Series flex. PVDF max. length 70' (21.3 m)

## Sensors

---

- ES825-200F Electronic, Discriminating - Containment, Manway and Piping Sumps, Dispenser Pan, Dry Annular, Includes Fault Detection Feature as Standard
- ES825-100F Electronic, Non-Discriminating - Containment, Manway and Piping Sumps, Dispenser Pan, Dry Annular, Includes Fault Detection Feature as Standard
- LLP203 3GPH Catastrophic Line Leak Detector
- LS600LD Float, Containment, Manway and Piping Sumps, Dispenser Pan
- LS600xx Multi-Float, High / Low Level and Pump Control
- RSU800 Float, Wet Annular / Reservoir
- LS610 Float, Dry Annular
- HS100D2 Polymer / Float – Wet Well, up to 45' (13.7 m) depth
- HS100ND Polymer – Dry Containment, 1' to 45' (0.3 m to 13.7 m) length

Most sensors are available with Fault-Detect Supervised sensor and wiring option. Add "F" Suffix to Model Number

## Remote Displays

---

- ETD1000T Addressable (up to 16), Multi-Drop, Touchscreen-Based, Remote Electronic Tank Display Panel
  - ETD1000 Addressable (up to 16), Multi-Drop, Remote Electronic Tank Display Panel
  - RA400 Addressable (up to 16), Multi-Drop, Programmable Remote Audible/Visual Alarm Panel
  - ETD1000W Wireless Remote Electronic Tank Display Panel\*
  - RA400W Wireless Programmable Remote Audible/Visual Alarm Panel\*
- \*Note: MPX200 Master Peripheral Expansion Module required.

## Certifications / Approvals

---

- UL/cUL Approved, File #E139464
- Third-party approved, NWGLDE-listed

70017 – TMS3000E Spec Sheet - 3-07-2024  
Note: Specifications subject to change without notice.



Pneumercator Company, Inc.  
1785 Expressway Drive North  
Hauppauge, New York 11788

Tel: (631) 293-8450  
Fax: (631) 293-8533  
<http://www.pneumercator.com>