

ASSEMBLY INSTRUCTIONS - RISER MOUNTED MODEL MP45xS / MP55xS

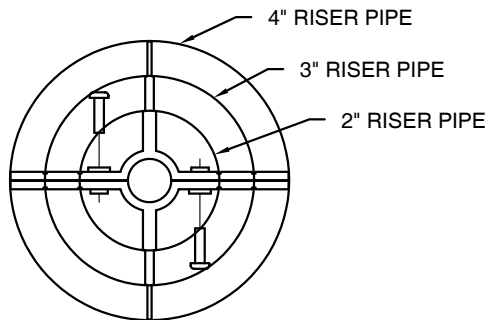
IMPORTANT! ALL of the following requirements must be met;

- Probe length does not exceed 15 feet.
- Tank does not contain chemicals, solvents or heated products where standard PVC leader cable is used.
- Tank does contain chemical, solvent or heated products where chemical/heat resistant probe assembly and leader cable are used and confirmed to be compatible with stored product.
- Tank is not pressurized.

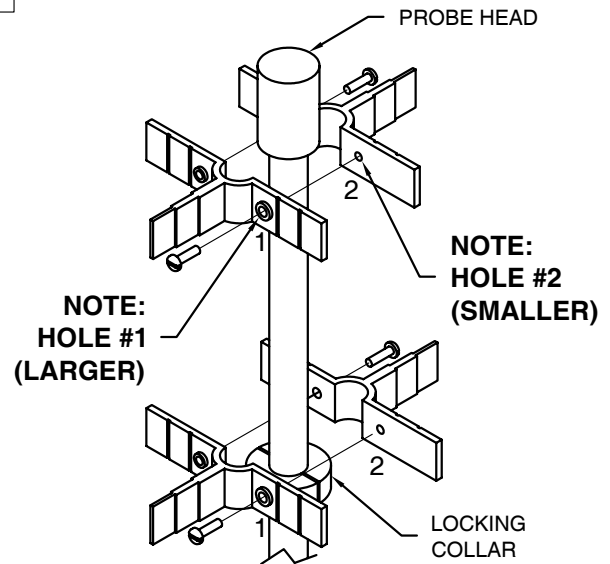
Questions? Contact Technical Support at (800) 209-7858

FOR INSTALLATION AND WIRING SEE TMS MANUAL

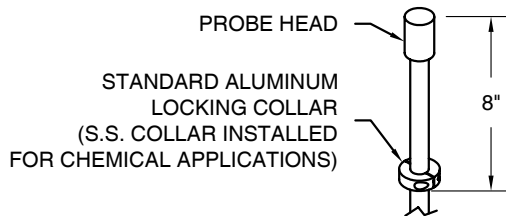
1 Trim spacers for the desired schedule 40 riser pipe diameter.



3 Assemble riser spacers.



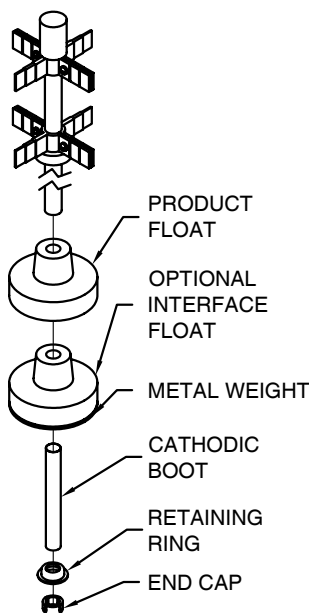
2 Verify that the bottom of the locking collar is located 8" from the top of the probe head and confirm that collar is secured.



NOTE: AT THIS POINT MODEL MP452S ASSEMBLY IS COMPLETE. PROCEED TO STEP 4 TO COMPLETE MODEL MP450S ASSEMBLY.

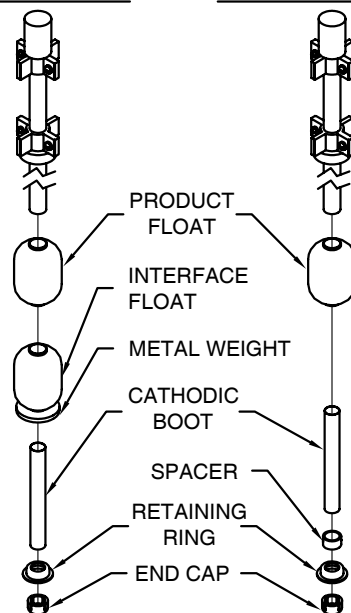
4 **4" RISER MOUNTING ASSEMBLY**

STANDARD APPLICATIONS



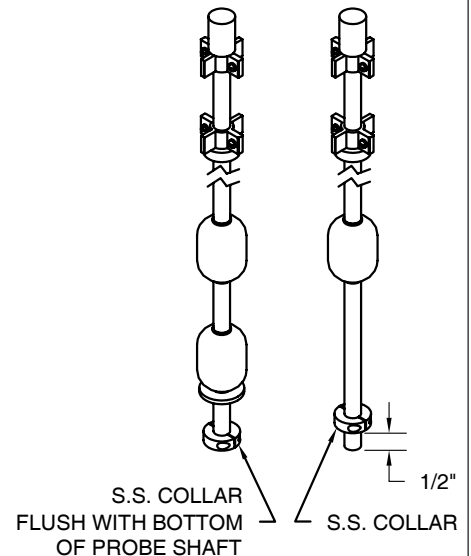
2" RISER MOUNTING ASSEMBLY

STANDARD APPLICATIONS
WITH INTERFACE WITHOUT INTERFACE



CHEMICAL APPLICATIONS

WITH INTERFACE WITHOUT INTERFACE



PNEUMERCATOR
Liquid Level Control Systems