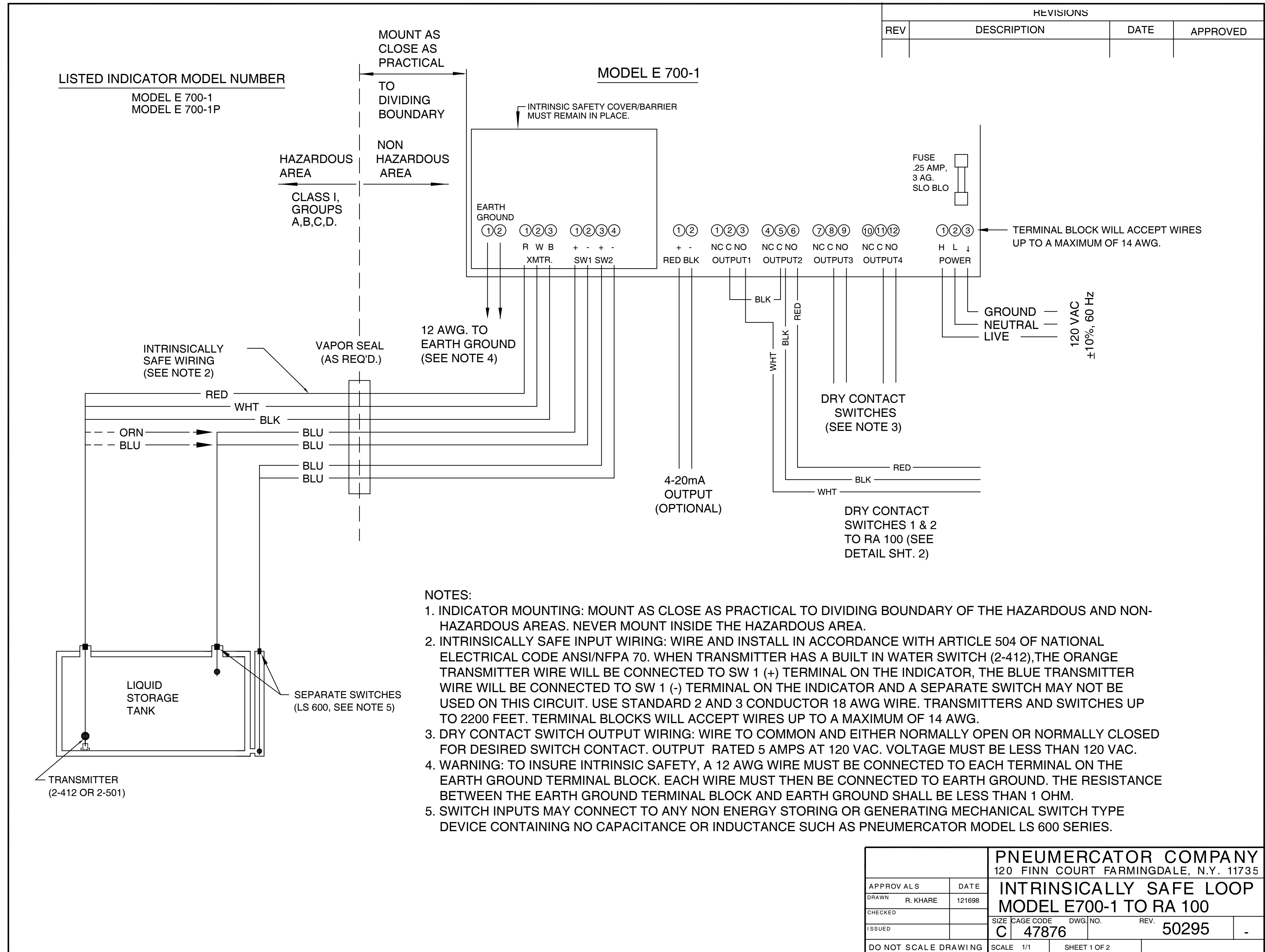


REVISIONS			
REV	DESCRIPTION	DATE	APPROVED

LISTED INDICATOR MODEL NUMBER

MODEL E 700-1
MODEL E 700-1P

MODEL E 700-1

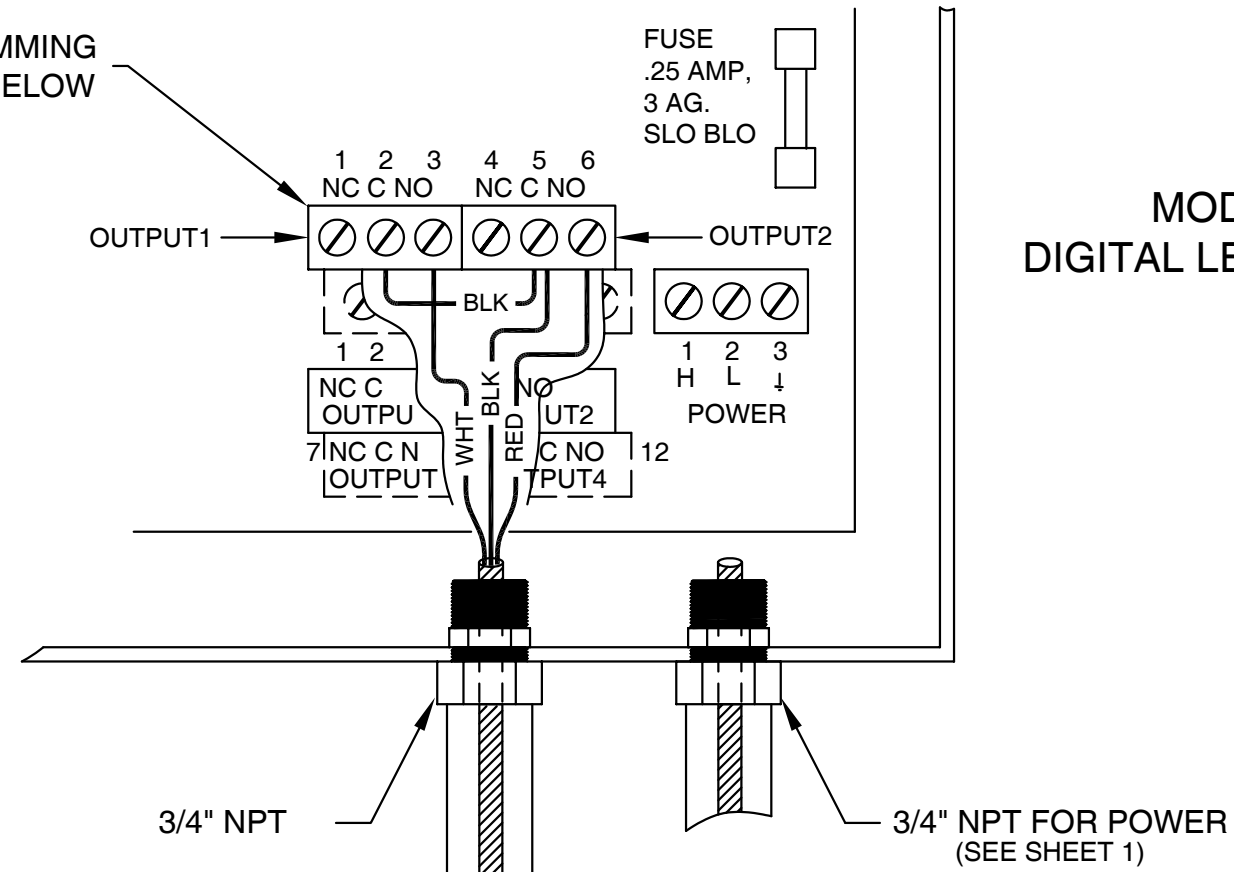


NOTES:

- INDICATOR MOUNTING: MOUNT AS CLOSE AS PRACTICAL TO DIVIDING BOUNDARY OF THE HAZARDOUS AND NON-HAZARDOUS AREAS. NEVER MOUNT INSIDE THE HAZARDOUS AREA.
- INTRINSICALLY SAFE INPUT WIRING: WIRE AND INSTALL IN ACCORDANCE WITH ARTICLE 504 OF NATIONAL ELECTRICAL CODE ANSI/NFPA 70. WHEN TRANSMITTER HAS A BUILT IN WATER SWITCH (2-412), THE ORANGE TRANSMITTER WIRE WILL BE CONNECTED TO SW 1 (+) TERMINAL ON THE INDICATOR, THE BLUE TRANSMITTER WIRE WILL BE CONNECTED TO SW 1 (-) TERMINAL ON THE INDICATOR AND A SEPARATE SWITCH MAY NOT BE USED ON THIS CIRCUIT. USE STANDARD 2 AND 3 CONDUCTOR 18 AWG WIRE. TRANSMITTERS AND SWITCHES UP TO 2200 FEET. TERMINAL BLOCKS WILL ACCEPT WIRES UP TO A MAXIMUM OF 14 AWG.
- DRY CONTACT SWITCH OUTPUT WIRING: WIRE TO COMMON AND EITHER NORMALLY OPEN OR NORMALLY CLOSED FOR DESIRED SWITCH CONTACT. OUTPUT RATED 5 AMPS AT 120 VAC. VOLTAGE MUST BE LESS THAN 120 VAC.
- WARNING: TO INSURE INTRINSIC SAFETY, A 12 AWG WIRE MUST BE CONNECTED TO EACH TERMINAL ON THE EARTH GROUND TERMINAL BLOCK. EACH WIRE MUST THEN BE CONNECTED TO EARTH GROUND. THE RESISTANCE BETWEEN THE EARTH GROUND TERMINAL BLOCK AND EARTH GROUND SHALL BE LESS THAN 1 OHM.
- SWITCH INPUTS MAY CONNECT TO ANY NON ENERGY STORING OR GENERATING MECHANICAL SWITCH TYPE DEVICE CONTAINING NO CAPACITANCE OR INDUCTANCE SUCH AS PNEUMERCATOR MODEL LS 600 SERIES.

APPROVALS		DATE		PNEUMERCATOR COMPANY			
DRAWN R. KHARE		121698		120 FINN COURT FARMINGDALE, N.Y. 11735			
CHECKED				INTRINSICALLY SAFE LOOP			
ISSUED				MODEL E700-1 TO RA 100			
SIZE	CAGE CODE	DWG. NO.	REV.				
C	47876		50295				
DO NOT SCALE DRAWING		SCALE 1/1	SHEET 1 OF 2				

SEE PROGRAMMING INSTRUCTIONS BELOW

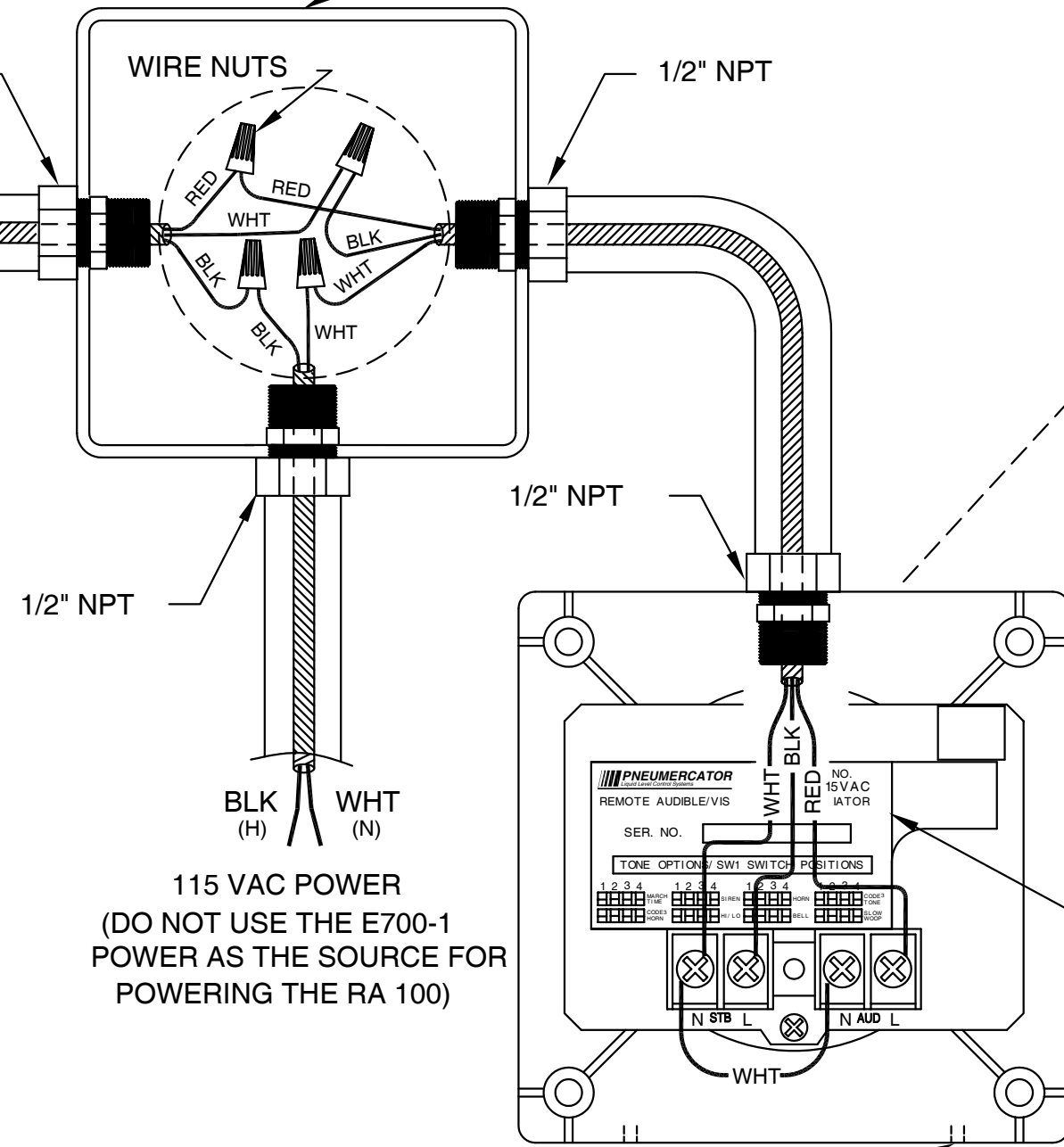


**MODEL E700-1
DIGITAL LEVEL MONITOR**

3/4" NPT
3/4" NPT FOR POWER (SEE SHEET 1)

JUNCTION BOX (BY CUST.)
MUST BE WATERTIGHT IF
LOCATED OUTDOORS.

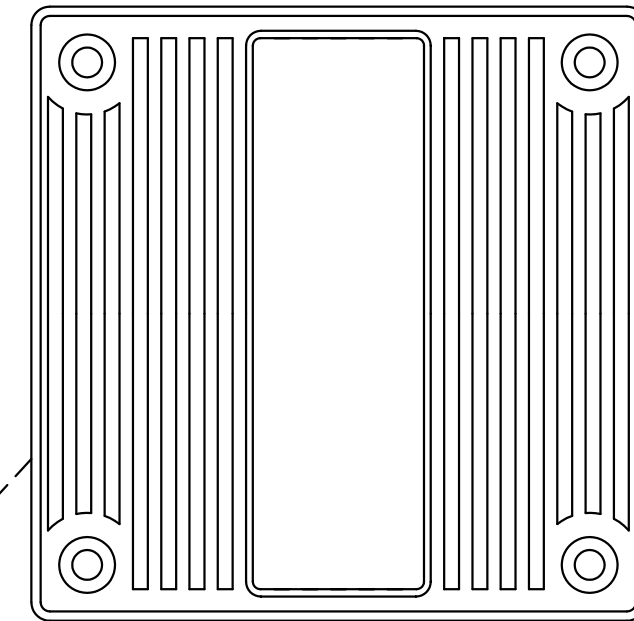
3/4" NPT
1/2" NPT



115 VAC POWER
(DO NOT USE THE E700-1
POWER AS THE SOURCE FOR
POWERING THE RA 100)

RA 100 MUST BE INSTALLED
WITH THE DRIP HOLES LOCATED
ON THE BOTTOM.

**RA 100-115VAC REMOTE AUDIBLE/
VISUAL ANNUNCIATOR**



CAUTION ON RA 100-115VAC:
THIS SYSTEM IS NOT INTRINSICALLY
SAFE OR EXPLOSION PROOF. DO NOT
INSTALL INSIDE THE HAZARDOUS AREA.

PROGRAM RELAYS FOR RA100 ALARM

F3521E - turns relay 2 on for high
level alarm

F36201E - sets auto shut off for audible
high level alarm for 1 minute.

FOR ADDITIONAL MINUTES SEE MANUAL PAGE 28.

PNEUMATOR MODEL NO. RA 100 - 115VAC
REMOTE AUDIBLE/VISUAL ANNUNCIATOR
SER. NO. []

TONE OPTIONS/SW1 SWITCH POSITIONS

1	2	3	4	1	2	3	4	1	2	3	4	1	2	3	4
CODE1	CODE2	CODE3	CODE4	CODE1	CODE2	CODE3	CODE4	CODE1	CODE2	CODE3	CODE4	CODE1	CODE2	CODE3	CODE4
MARCH	TIME	CODE3	CODE4	SPEN	HOEN	HOEN	HOEN	HOEN	HOEN	HOEN	HOEN	HOEN	HOEN	HOEN	HOEN
CODE1	CODE2	CODE3	CODE4	HELO	BELL	BELL	BELL	BELL	BELL	BELL	BELL	BELL	BELL	BELL	BELL
HOEN	HOEN	HOEN	HOEN	BELL	SLOW	SLOW	SLOW	SLOW	SLOW	SLOW	SLOW	SLOW	SLOW	SLOW	SLOW
HOEN	HOEN	HOEN	HOEN	BELL	WOOP	WOOP	WOOP	WOOP	WOOP	WOOP	WOOP	WOOP	WOOP	WOOP	WOOP

INTRINSICALLY SAFE LOOP MODEL E700-1 TO RA 100			
SIZE	CAGE CODE	DWG. NO.	REV.
C	47876		50295
SCALE	1/1	SHEET	2 OF 2