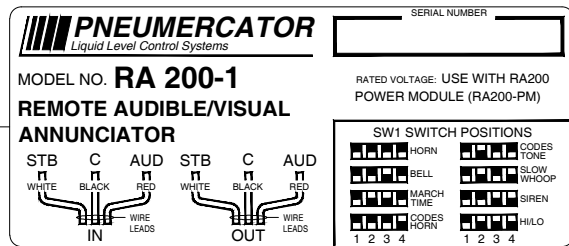


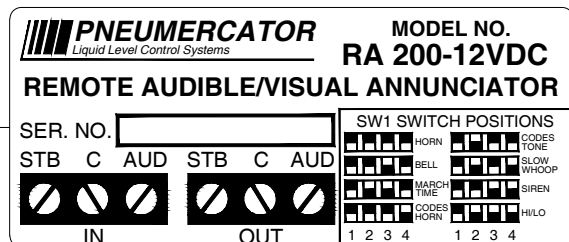
WIRING DRAWING - RA200* TO LC2000 & TMS2000/3000

* "RA200" CAN ALSO BE WRITTEN AS "RA200-1"

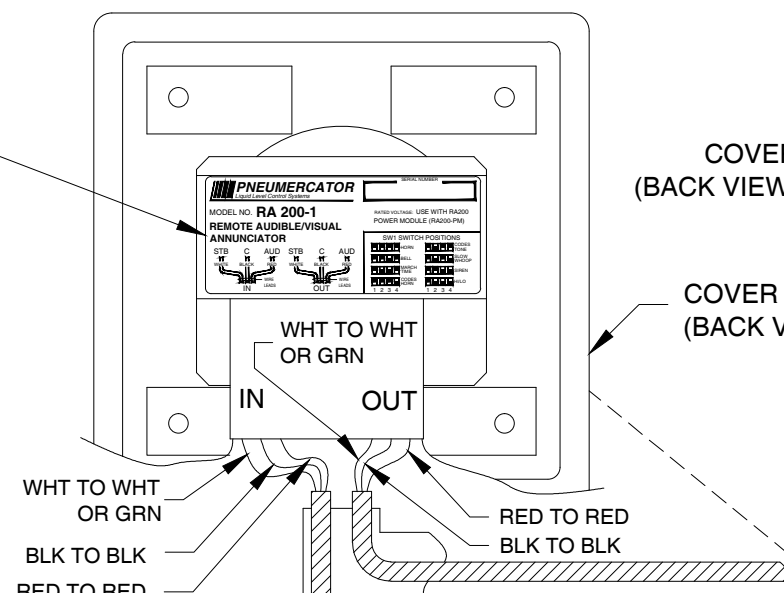
NEW PRODUCT LABEL (ENLARGED FOR CLARITY)



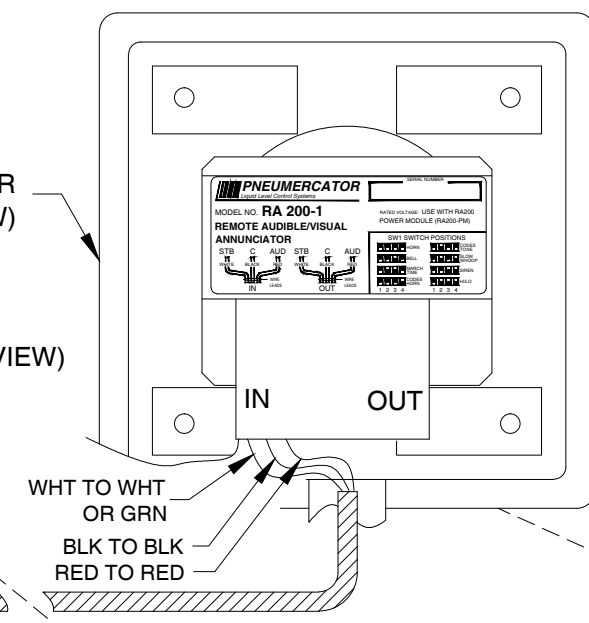
OR ORIGINAL PRODUCT LABEL (SHOWN FOR REF.)



** RA200 REMOTE AUDIBLE/VISUAL ANNUNCIATOR



** RA200 OPTIONAL (TYP. FOR MULTIPLE LOCATIONS)

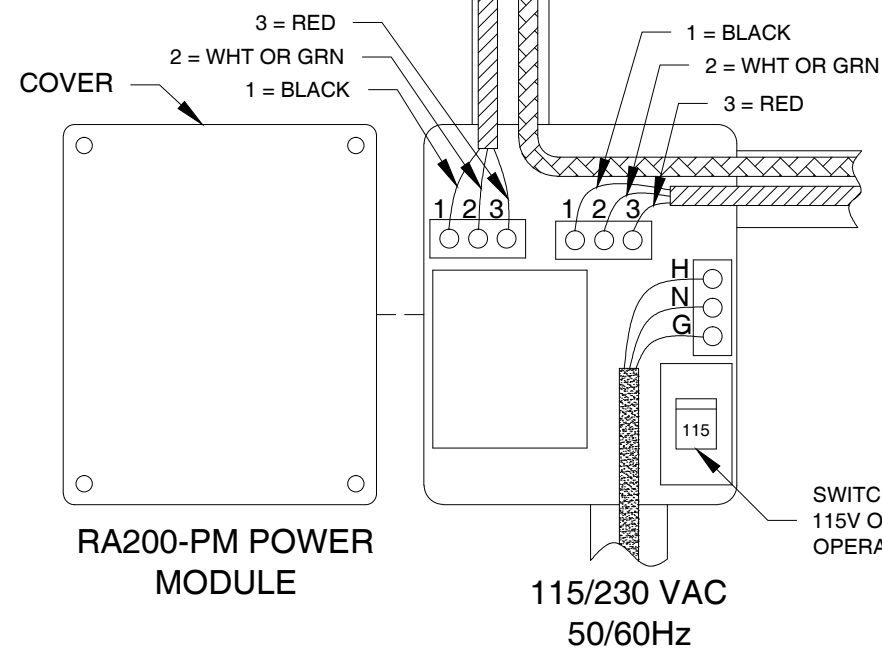


WARNING
THIS SYSTEM IS NOT INTRINSICALLY SAFE OR EXPLOSION PROOF. DO NOT INSTALL INSIDE THE HAZARDOUS AREA.

TO TMS (SEE PAGE 2)

TO RELAY OUTPUTS

TO CONTACT CLOSURE INPUTS



SEE NOTE 3 ON PAGE 2

- 1 = RED
- 2 = BLACK
- 3 = WHT OR GRN

1/2" NPT (TYP.)

JUNCTION BOX (BY CUSTOMER) MUST BE WATERTIGHT IF LOCATED OUTDOORS

3 COND. CABLE	COND. COLOR	FUNCTION
	RED	TEST
	BLACK	SWITCH COMMON
	W OR G	RESET
	RED	HORN
	BLACK	HORN/STROBE COMMON
	W OR G	STROBE

"W" = WHITE; "G" = GREEN



120 FINN COURT FARMINGDALE, N.Y. 11735

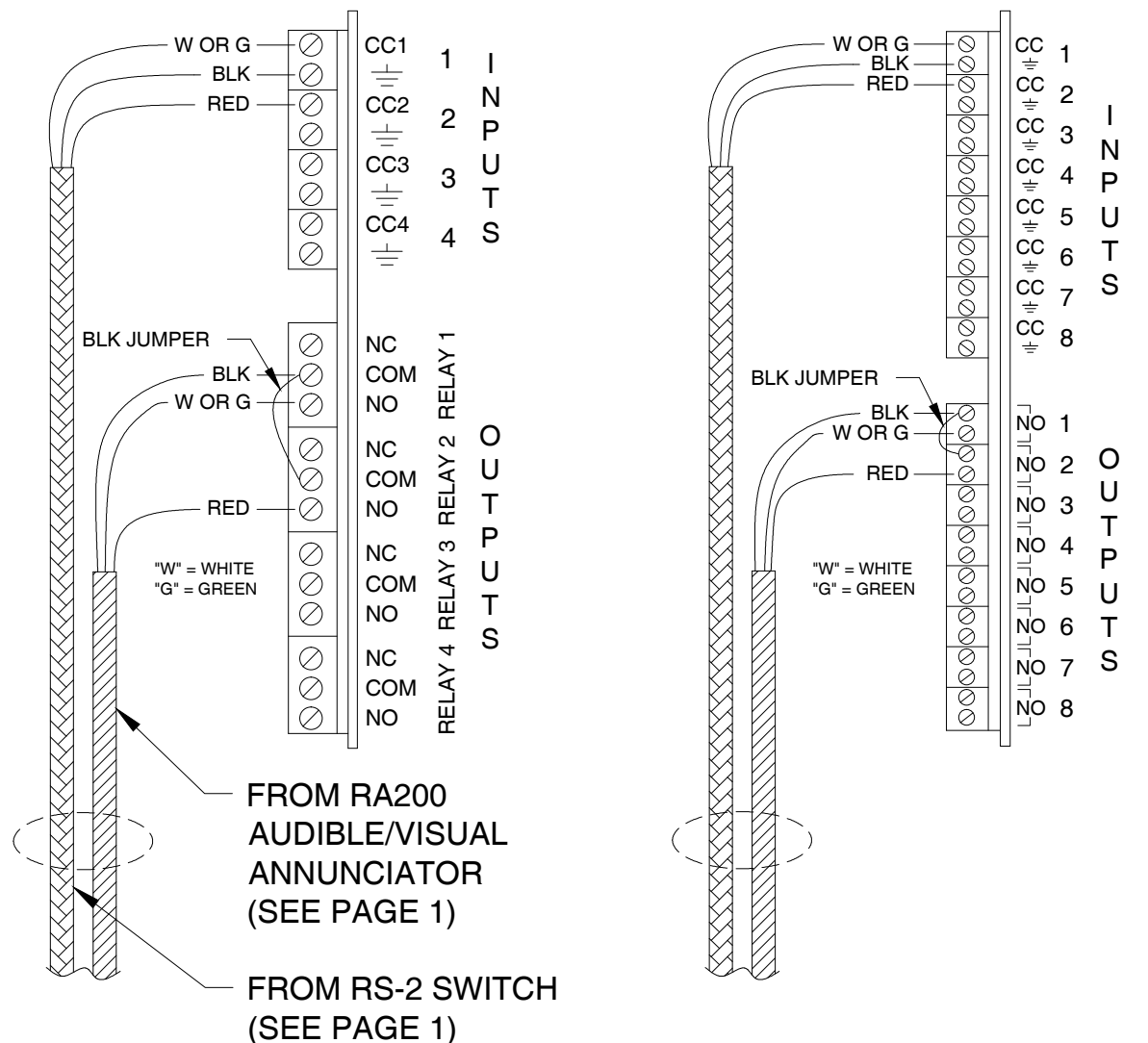
WIRING DRAWING - RA200* TO LC2000 & TMS2000/3000

* "RA200" CAN ALSO BE WRITTEN AS "RA200-1"

TMS3000

WIRING TERMINATION EXAMPLES SHOWN FOR REFERENCE
(SEE NOTES)

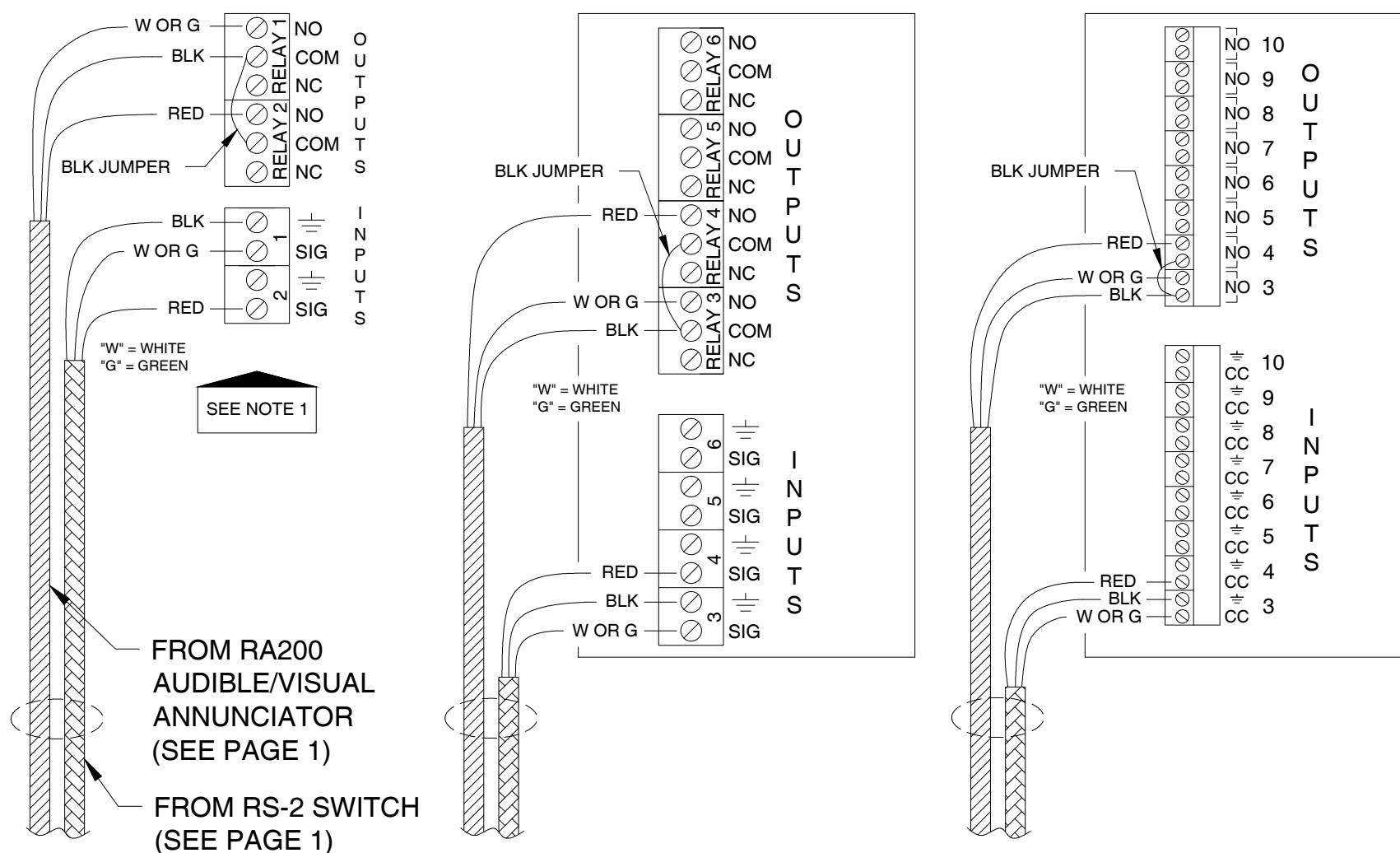
4X4 RELAY I/O CARD --- OR --- 8X8 RELAY I/O CARD



LC2000/TMS2000

WIRING TERMINATION EXAMPLES SHOWN FOR REFERENCE
(SEE NOTES)

BUILT-IN RELAY I/Os --- OR --- 4X4 RELAY I/O CARD --- OR --- 8X8 RELAY I/O CARD



NOTES:

1. WIRING MAY BE TERMINATED ON ANY TMS RELAY INPUT/OUTPUT. HOWEVER, IF REQUESTED WITH ORDER, WIRING MUST BE TERMINATED ON THE SPECIFIED PRE-PROGRAMMED INPUTS/OUTPUTS. REMINDER: PROGRAMMING STARTS WITH THE BUILT-IN MAIN BOARD RELAYS FOR LC2000 AND TMS2000.
2. DO NOT MODIFY TMS ENCLOSURE. USE DESIGNATED CONDUIT KNOCKOUTS/OPENINGS AS SHOWN IN THE TMS INSTALLATION MANUAL.
3. TOP CONDUIT HOLE ELIMINATED ON RS-2 AS SHOWN ON PAGE 1. HOWEVER, EXISTING STOCK WITH TOP CONDUIT HOLE MAY STILL BE SUPPLIED. IF AVAILABLE BUT NOT USED, THE TOP CONDUIT HOLE MUST BE PLUGGED WITH AN APPROPRIATE FITTING AND WATERTIGHT IF LOCATED OUTDOORS.

3 COND. CABLE	COND. COLOR	FUNCTION
	RED	TEST
	BLACK	SWITCH COMMON
	W OR G	RESET
	RED	HORN
	BLACK	HORN/STROBE COMMON
	W OR G	STROBE

"W" = WHITE; "G" = GREEN