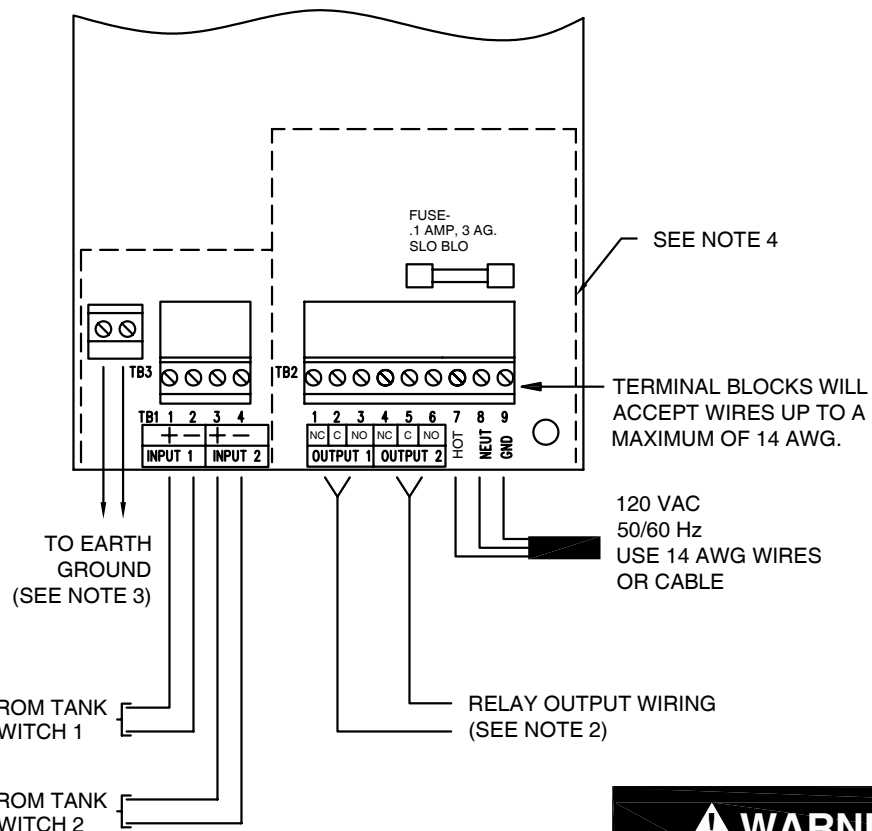
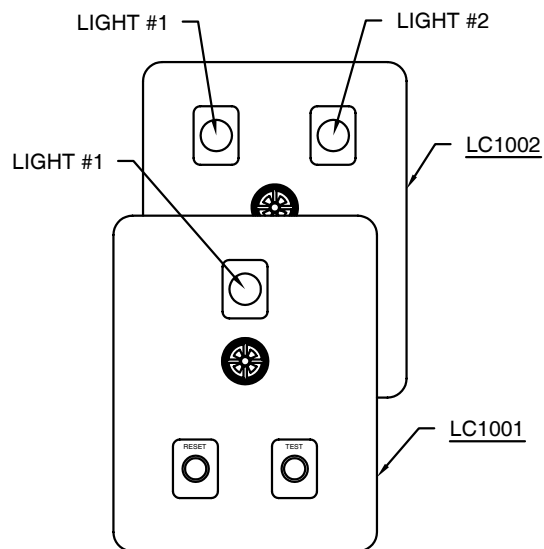


# IMPORTANT! INTRINSICALLY SAFE WIRING INSTRUCTIONS - MODELS LC1001 AND LC1002



SWITCH INPUTS (SEE NOTE 1)	
INPUT 1	LIGHT #1
INPUT 2	LIGHT #2

**⚠ WARNING**

Refer to LC installation manual for WARNINGS and CAUTIONS before proceeding. FAILURE TO COMPLY MAY RESULT IN PERSONAL INJURY, PROPERTY LOSS AND EQUIPMENT DAMAGE.

**IMPORTANT NOTES - READ CAREFULLY BEFORE INSTALLATION**

1. INPUT WIRING: USE STANDARD 2 CONDUCTOR 18 OR 22 AWG UP TO 5000 FEET.
2. DRY CONTACT SWITCH OUTPUT: WIRE TO COMMON AND EITHER NORMALLY OPEN OR NORMALLY CLOSED FOR DESIRED SWITCH CONTACT. OUTPUT RATED 3 AMPS AT 120 VAC.
3. WARNING: TO INSURE INTRINSIC SAFETY, A 12 AWG WIRE MUST BE CONNECTED TO EACH TERMINAL. EACH WIRE MUST THEN BE CONNECTED TO THE SYSTEM EARTH GROUND (GROUND BUSS BAR) IN THE SAME SERVICE PANEL AS LC POWER. A GROUNDING ROD, COLDWATER PIPE OR OTHER CONNECTION SHOULD NOT BE USED.
4. INTRINSIC SAFETY COVER/BARRIER MUST REMAIN IN PLACE.