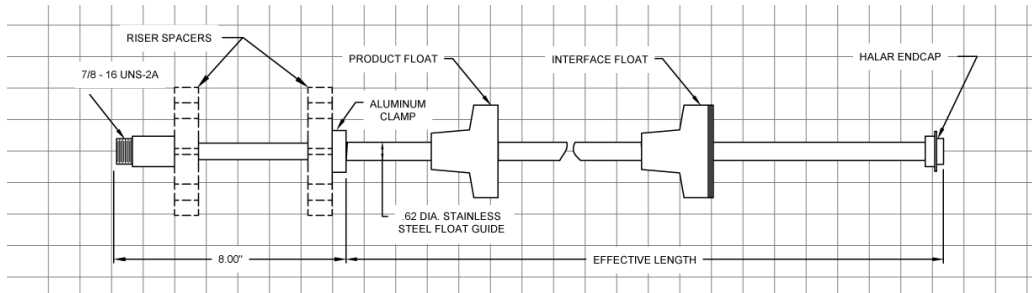


**Rigid Magnetostrictive Probe, EPA Compliant\***



**Product Description**

The MP 450S Level Gauging Probe utilizes proven Magnetostrictive technology for accuracy and reliability. When used in conjunction with the TMS, it provides the ability to perform EPA compliant in-tank leak tests in underground storage tanks. The probe is available in lengths up to eighteen feet.

**Applications**

- Below Ground Storage Tanks
- Oil / Water Separators (See MP452S Series spec)
- All Petroleum Products
- Most Chemical Solvents

**Specifications**

- Technology: Magnetostrictive, Dual Float, w/ reflection resolution doubling
- Accuracy (Minimum): Product Level: 0.0005"  
Water Level: 0.001"  
Temperature: 0.001° F
- Materials: Shaft: 316 SS  
Floats: Buna-N (Optional 316 SS or Urethane)
- Riser Mount: Minimum 2" dia. riser, 4" dia. riser required for in-tank leak
- Direct Mount: Minimum 2" opening with bushing or flange mount
- Probe Lengths: 4' – 12' Standard, Custom Sizes Available up to 18'
- Temperature Sensing: 6 Thermistors; 5 in shaft, 1 in probe head
- Location Approval: UL Class I, Div 1, Groups C and D; cUL Class I, Zone 0, Group IIB
- Operating Temperature: -40° to +175°F (-40° to +80° C)
- Operating Pressure: 150 PSIG
- Field Wiring: 22AWG, 2-Conductor twisted pair w/ shield  
Belden 8441, Belden 8761, Alpha 1736C or equiv., maximum length 3000' to 4600'

**Installation**

Probes can be installed into a vertical riser pipe with the probe foot contacting the tank bottom, or direct-mounted at the tank top via a 3/4" NPT compression fitting kit. Consult factory for probes installed in chemical environments.

**Certifications/Approvals**

- ULcUL Approved\*, File #E139464
- Third-Party Approved, EPA-Compliant for In-Tank Leak Testing:\*
  - Up to 20,000 Gal. tank capacity, minimum tank inventory for test 20%
  - 0.2 GPH Leak Test: Pd = 99.9%, Pfa = 0.1%
  - 0.2 GPH Quick Test: Pd = 95%, Pfa = 5%
  - 0.1 GPH Precision Test: Pd = 95.3%, Pfa = 4.7%
  - Up to 75,000 Gal. tank capacity, minimum tank inventory for test 50%
  - 0.2 GPH Leak Test: Pd = 97.3%, Pfa = 2.7%

\* When used in conjunction with the TMS series controllers

Note: Specifications subject to change without notice. 7-01-2009