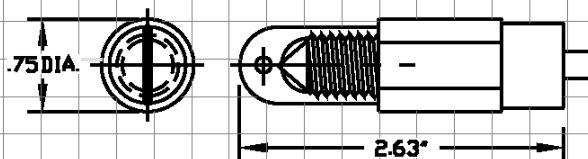


Solid-State, Electro-Optic Secondary Containment Leak Sensor for Chemical Applications with Fault Detection

**Chemical
Resistant**



Outline Specifications



Product Description

The Model ES825-100CF is a solid-state, electronic leak sensor utilizing electro-optic technology to detect the presence of liquids in secondary containment applications. The "C" version includes all of the features of the standard ES825-100F, with the addition of a chemical-resistant sensor body and cable resistant to most acids, alkalines and solvents. The sensor contains no moving parts, is unaffected by vapors, and due to its compact size is ideal for interstitial spaces. When connected with a TMS series controller, the ES825-100CF supports Pneumercator's FAULT-DETECT supervised wiring technology, which automatically detects sensor or field wiring faults.

Applications

- Dry Annular Space in Double-Wall Tanks
- Containment, Manway and Piping Sumps

Specifications

- Technology: Electro-optic, no moving parts
- Wetted Materials: PTFE (Teflon®) and Epoxy
- Operating Temperature: -40° to +175°F (-40° to +80° C)
- Cable: 22AWG, 3-Conductor, PTFE (Teflon®) Jacket, 25' Length
- Pass-thru Opening Size: Minimum 3/4" NPT
- Location Approval*: UL Class I, Div 1, Groups C and D; cUL Class I, Zone 0, Group IIB

Installation

Sensor may be suspended by its cable, placed on the containment or sump floor, or thru-wall mounted via a 1/4" FNPT opening. For dry annular applications, sensor may be pulled through using fish tape attached to sensor pull ring, or pushed through with a section of 1/2" ENT (not included) attached to the back end of the sensor.

Certifications/Approvals

- UL/cUL Approved, File #E139464
- Third-Party EPA Listed*

*When used in conjunction with the TMS series controllers

Note: Specifications subject to change without notice. 07-06-2009